

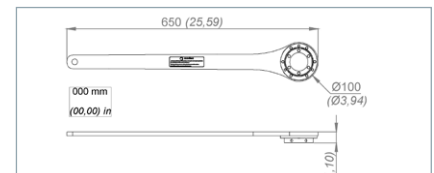
TORQUE REACTION MANAGEMENT SYSTEM

To guarantee operator **safety** and **comfort**, it's **essential** to use a **torque reaction management system**. Several types of system are available for use in different situations. Each is compatible with the whole range of actuators and adaptors because of their identical flange.

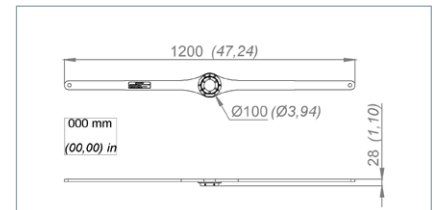
► SINGLE AND DOUBLE REACTION ARMS

Our actuators are supplied with a **torque reaction arm** which enables the torque to be controlled by a strap attached to the end of the bar and to a fixed point in the working environment. In this way, **the operator is not exposed to the torque reaction**, in particular at the end of the process.

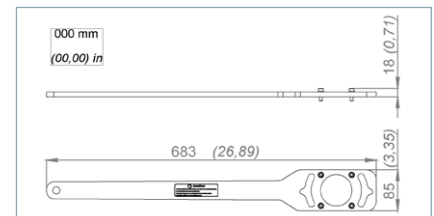
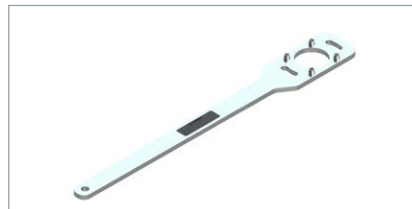
| Reference | Weight kg (lb) | Max torque Nm (lb.ft) |
|-----------|----------------|-----------------------|
| BR001 | 1,0 (2,2) | 900 (660) |
| BR002 | 1,6 (3,5) | 900 (660) |
| BR003 | 0,8 (1,8) | 900 (660) |



BR001



BR002



BR003

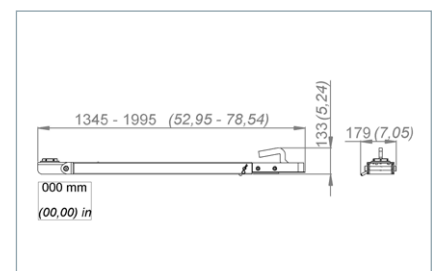
► ARTICULATED REACTION ARM FIXED TO VEHICLE TRAILER HATCH

This **telescopic metal bar** can be easily positioned between a vehicle's trailer hatch and the actuator. Ideal for **valves buried beneath roads**, or for any valve which has an upward facing handwheel.

| Reference | Weight kg (lb) | Max torque Nm (lb.ft) |
|-----------|----------------|-----------------------|
| BA001 | 12.3 (27,1) | 900 (660) |



BA001



IMPORTANT

For your comfort and safety, please carefully read the instruction manual before using the portable valve actuator.